

CHICHESTER  
CATHEDRAL



**FISH950**

**Classroom Resource**

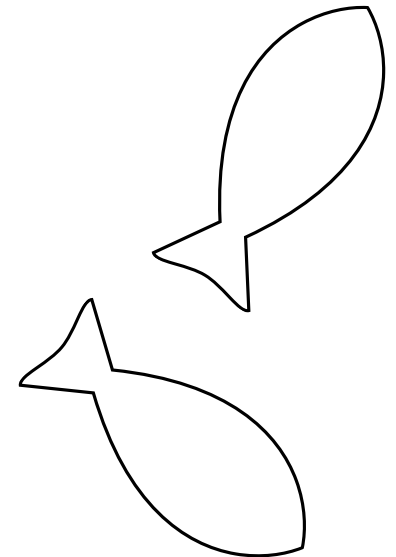
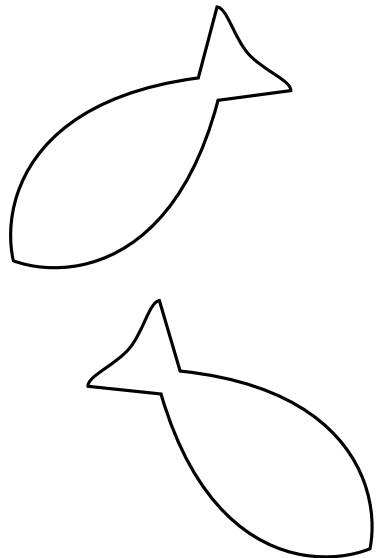
[CHICHESTER950.CO.UK](http://CHICHESTER950.CO.UK)  
[CHICHESTERCATHEDRAL.ORG.UK](http://CHICHESTERCATHEDRAL.ORG.UK)

# FISH950

Working in collaboration with Diocesan Board of Education, Chichester Cathedral is proud to host our joint schools' engagement project Fish950 this summer. Fish950 invites all you in year 6 from across the whole diocese to join in the celebrations by individually creating a fish which will be joined together in a sea of artwork filling the Cathedral nave.

**This is a once in a generation opportunity not to be missed!**

Our Fish950 art installation will be on display from Monday 23rd June when the Cathedral hosts the first of four diocesan leavers' services. **Fish950 will remain on display until Sunday 31st August 2025.** With fourteen leavers' services taking place across the diocese our aim is for all of you in year 6 to have a real connection to your cathedral regardless of where your leavers' service takes place. We invite all of you to bring your family, caregivers and friends over the summer holidays into your cathedral to find your artwork in the nave and experience this sacred space.



# Fish950 | The Nave where your fish will be on display



# Fish950 | Why Fish?

## *Connecting Faith with Artwork*



Scripture | John 21: 4-6 NIV

*Early in the morning, Jesus stood on the shore, but the disciples did not realize that it was Jesus. He called out to them, “Friends, haven’t you any fish?” “No,” they answered. He said, “Throw your net on the right side of the boat and you will find some.” When they did, they were unable to haul the net in because of the large number of fish.*

**Think:** Read this scripture slowly and listen carefully.

**Respond:** Read it again noting down any words that speak to you.

**Reflect:** Why did these words speak to you?

# Fish950 | *Miraculous Catch of the Fish*

## *Connecting Faith with Artwork*



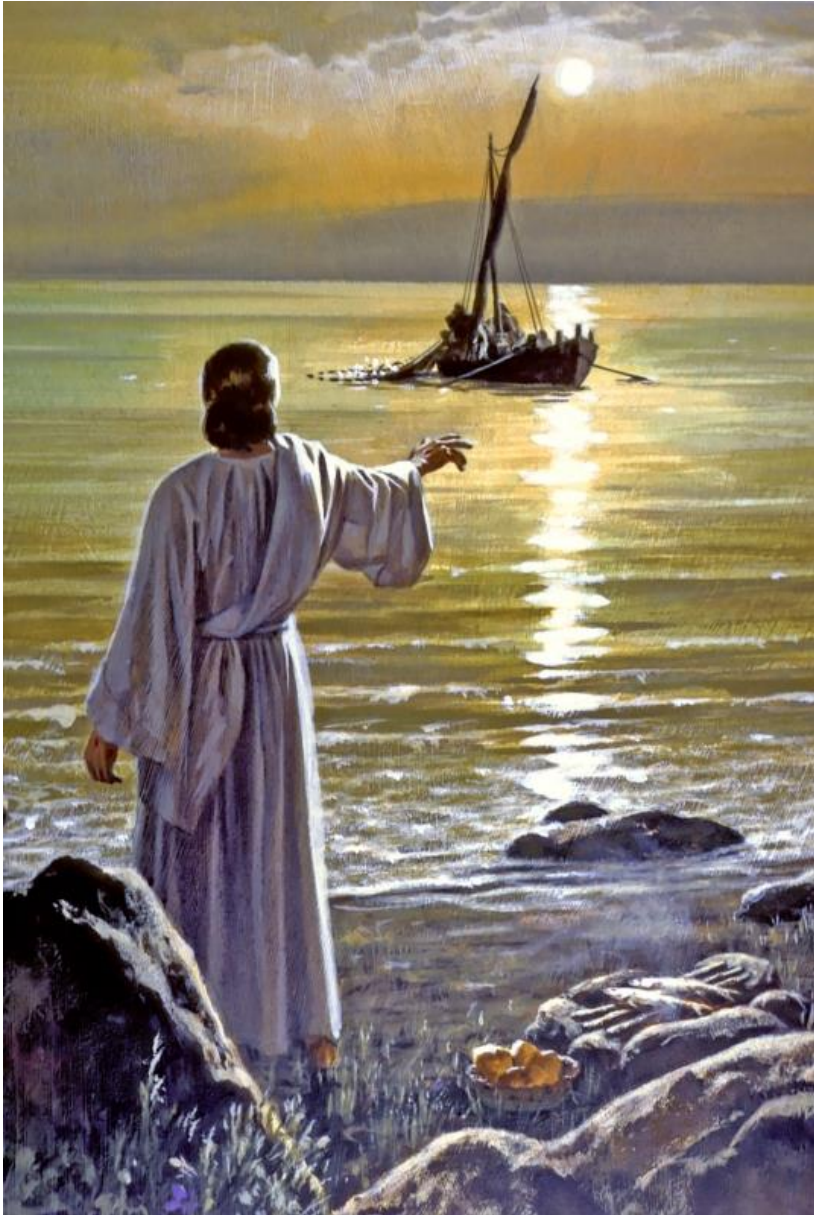
In John 21 we see how the disciples **did not recognize the resurrected Jesus** when he appeared to them on the shoreline.

**Jesus changed because of His resurrection.** Jesus had already appeared to the disciples after his resurrection, but still, they did not recognise Him.

**Why had Jesus changed because of his resurrection?**

# Fish950 | *Miraculous Catch of the Fish*

*Connecting Faith with Artwork*



In John 21, we see a **rare example of Jesus giving a direct instruction.**

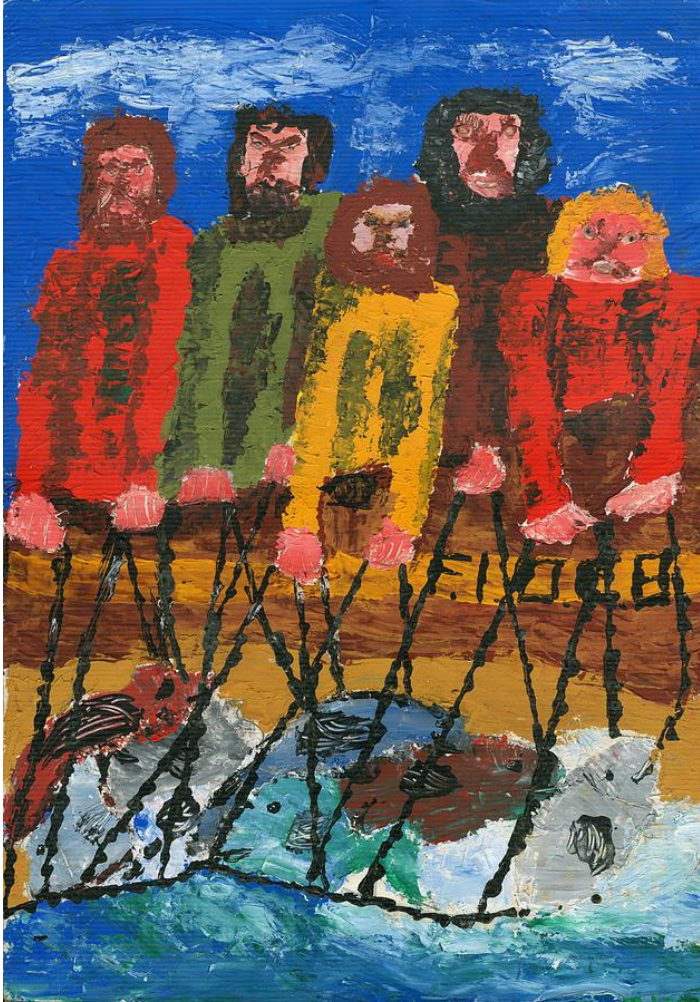
Elsewhere in the Gospels **Jesus tells parables and asks questions** that challenge people to come to their own conclusion. Here, Jesus gives a **command.**

Jesus, an **expert carpenter**, gives the disciples, **expert fishermen** a direct fishing instruction; to cast their net on the other side of the boat.

**How do you think the disciples felt getting a fishing instruction?**

# Fish950 | *Miraculous Catch of the Fish*

*Connecting Faith with Artwork*



Jesus calls out to the disciples and calls them **friends**. The resurrected Jesus reached out and called His followers.

**What happened when the disciples recognised His voice?**

# Fish950 | *Miraculous Catch of the Fish*

*Connecting Faith with Artwork*



## Themes to Explore

**Listening** – The disciples needed to **listen** to the voice of Jesus to **recongise** Him. Do you recognise the voice of Jesus in your life? How does Jesus talk to us?

**Giving** – Jesus knew what His friends needed and meet this need directly. Do you recognise the needs of your friends and **give** what you can to them?

**Blessing-** Why did Jesus cut to the chase and give His friends what they needed immediately?

He wanted to **bless them**. Bless them with the knowledge of His resurrection and bless them with confidence to go and **bless others** with the good news of the Jesus.

**Want to know more? Why not read the whole of John 21 and explore the story further.**



# Fish950 | Why Fish?

## Connecting Artwork with Chichester Cathedral



St Wilfrid founded a monastery in Selsey in 681 on land given over by the South Saxons, which was to become the first cathedral in Sussex. In 1075, following the Norman Conquest of 1066 the seat of the bishop was re-located to the old Roman city of Chichester, where it has stood ever since. St Wilfrid was known for helping the people of Selsey learn to fish.



This is Saint Wilfrid's stained-glass window at Chichester Cathedral. What clues are included within his stained-glass window that tell us he helped people learn how to fish?



# Fish950



## Question to consider for your artwork

Your fish must be **no larger than A4**. You can create your own shaped fish or use a simple template.

Your fish needs to be **strong and robust**.

Your fish must have **two sides** made on **two separate pieces of card** that will **come together** to create your **whole fish**.

Do you want to create something as a whole class? For example, all use the same pattern but decorate it individually? Or all do block printing?

Could you fit in a connection to the miraculous catch of the fish from John 21 in your design?

Could you include St Wilfrid somewhere?

You may use felt tip pens, colouring pencils, metallic pens and any water-based paint. Let your creativity flow!

Sadly, you **cannot stick** any decorations onto your fish which could fall off. This helps us keep the cathedral safe.

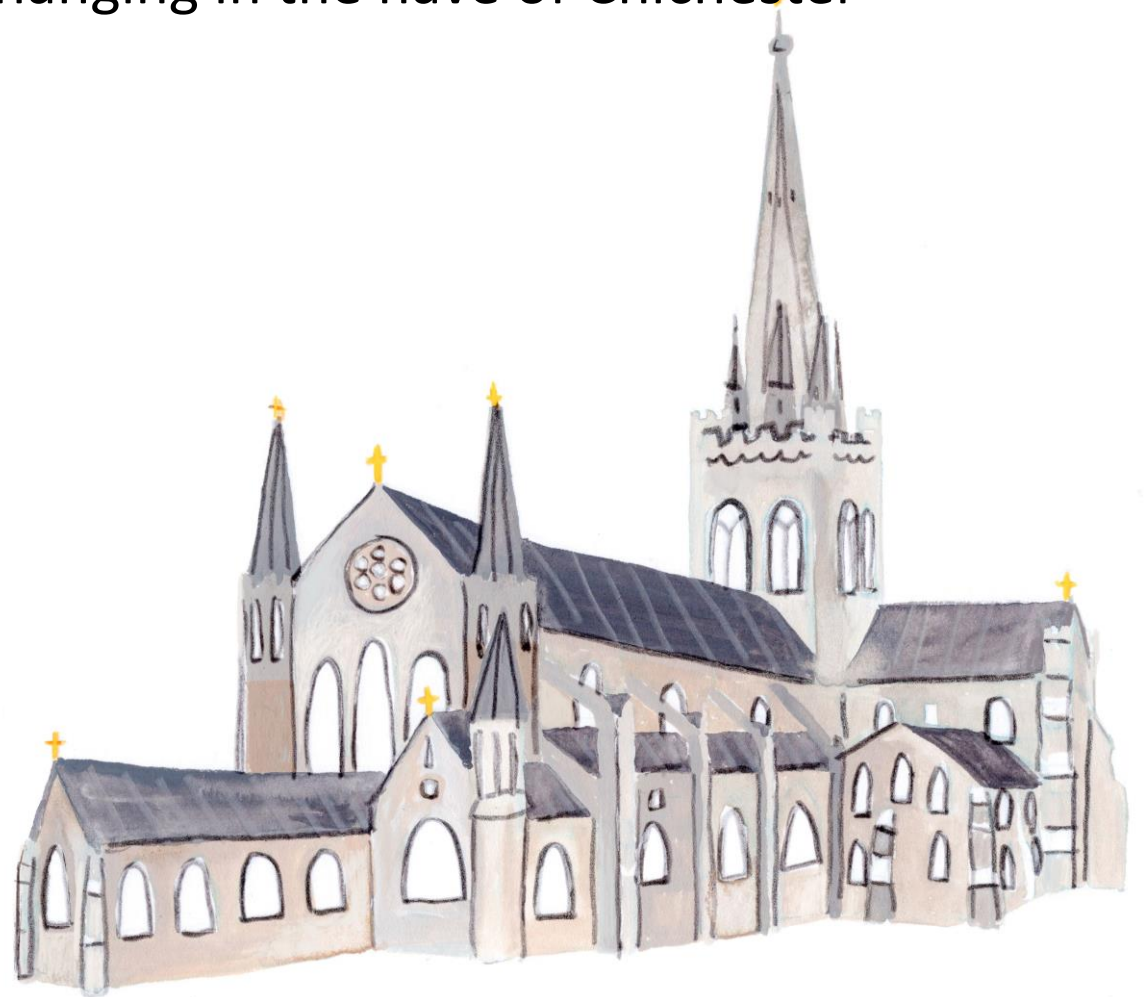
Remember your fish might be **high up in the nave**. Think about how you can make your fish eye catching and bold. **Small, intricate design will not be seen**.

Fish950 | The Nave where your fish will be on display



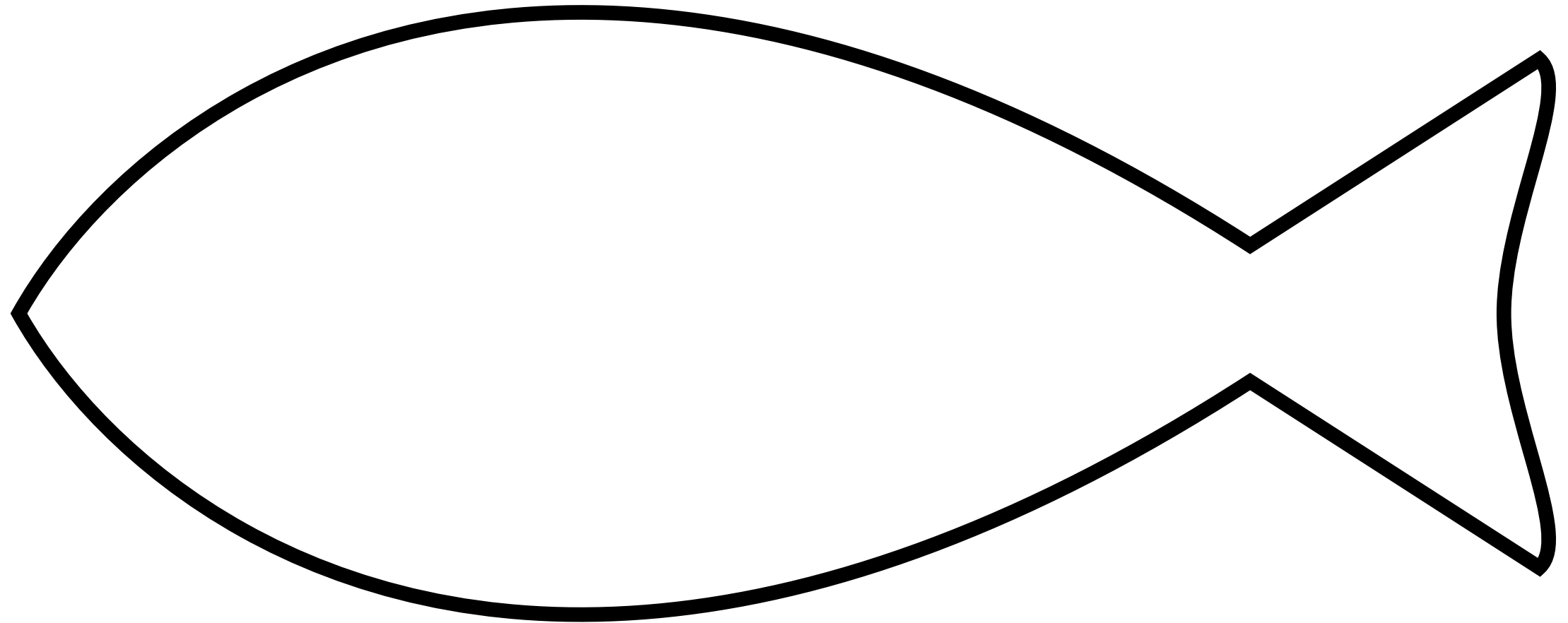
# Fish950 | Have Fun!

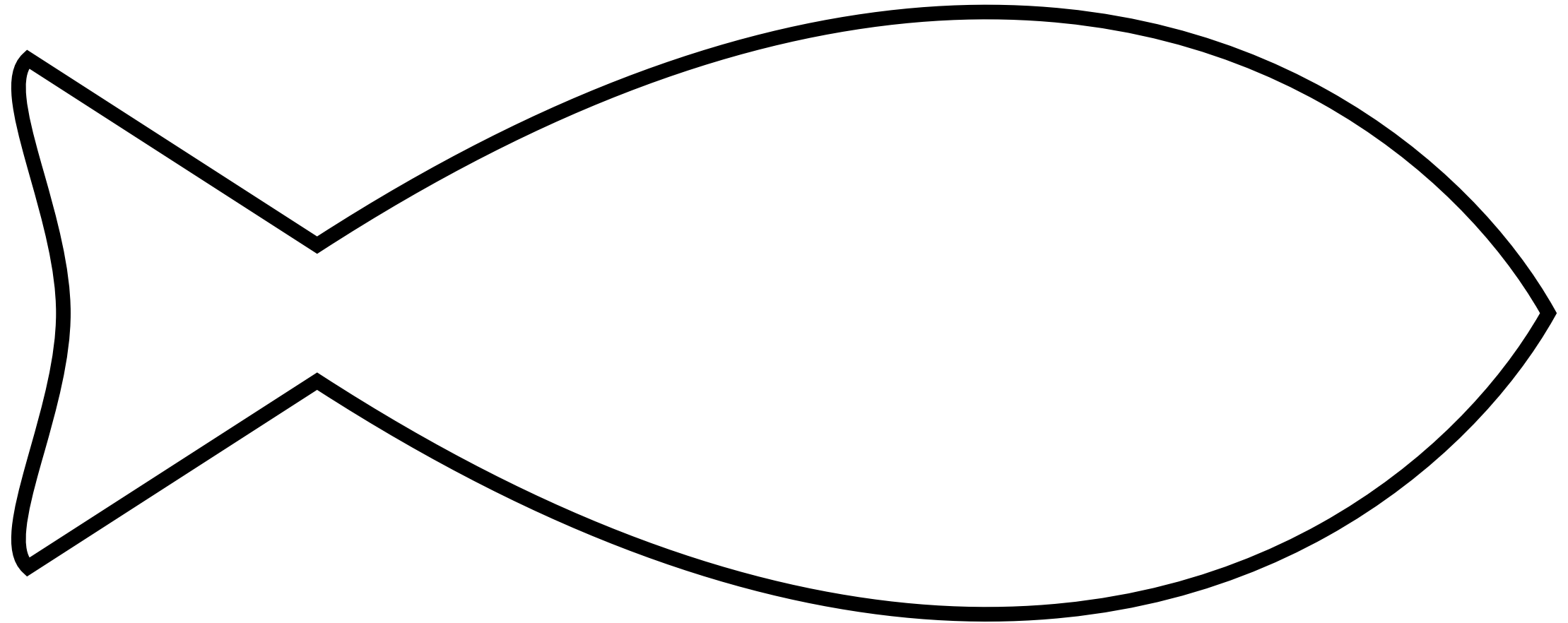
Have a wonderful and fun time creating your fish! We are so looking forward to seeing all your creations hanging in the nave of Chichester Cathedral this summer.





# Simple Fish Template





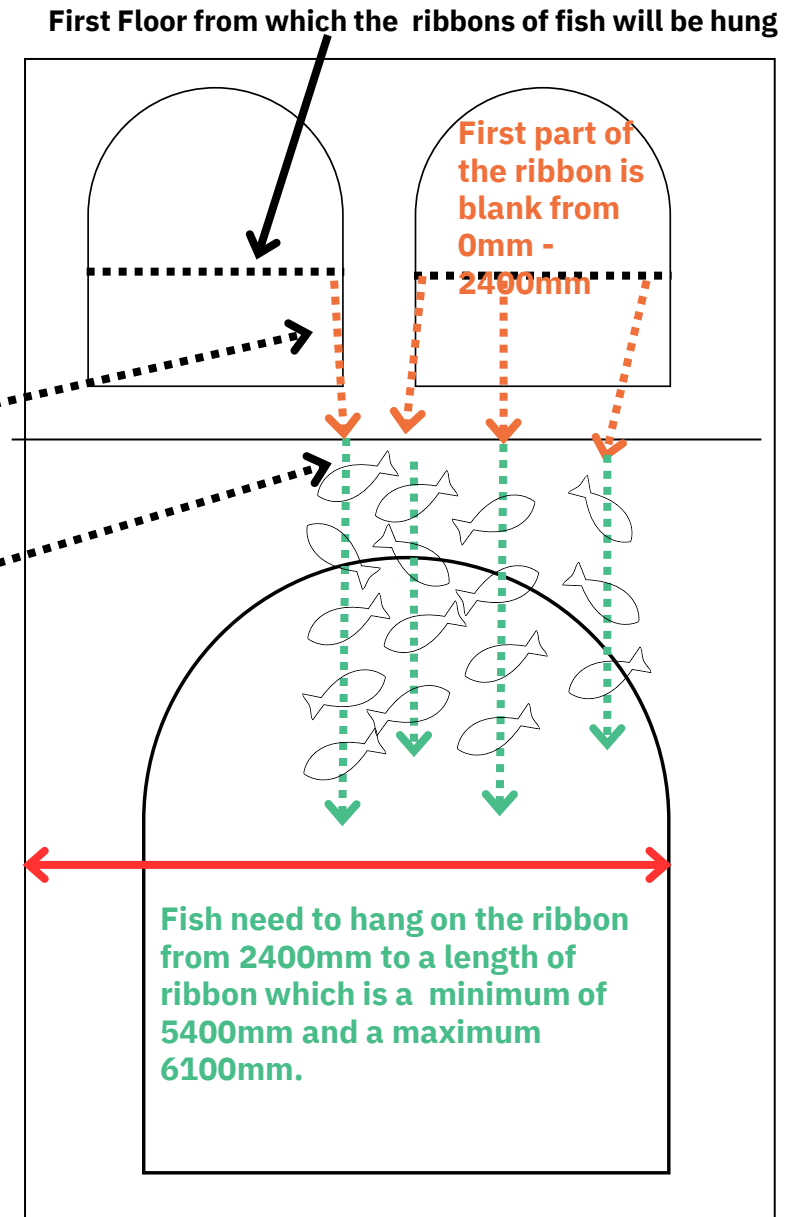
# **Fish950 | Additional Information for Staff**

# Fish950 | Essential Information

## Guidelines for Putting Together Your Hanging Fish

Our Fish950 art installation will hang in our historic nave over the summer. The children's fish need to be attached to satin ribbon which will hold the fish and create our 'sea'. The satin ribbon can be any shade of blue. The satin ribbon needs to be between **2-3 inches wide and between 5.4m - 6.1m long**. **A continuous, seamless piece of ribbon must be used for each ribbon line**. The ribbon lines will hold the fish and will be hung from the first floor of the nave over the archways into the Nave space below. Please see the diagram opposite.

- The **first 2400mm of ribbon will need to remain blank** and have no fish attached. This ribbon will be used to cast the fish into the nave from above.
- Fish will hang from the top of the stone archway **from 2400mm to a minimum length of 5400mm to a maximum length of 6100mm**.
- Fish need to be **attached at 15-20cm intervals** to ribbon creating our sea of swimming fish. Fish can be attached at different angles to give a sense of movement and fluidity.
- The two sides of the fish artwork need to be glued together with **extra strong PVA glue** with the **ribbon in the centre of the fish between it's two sides**. The fish will need to be **stapled at the top and bottom** where the ribbon come out of the fish to add stability.







# Fish950 | Postage

## Postage Address

All lines of fish need to be packaged appropriately so that care is taken to protect the artwork in transit and minimise risk of damage.

All artwork needs to be sent to the following address

**Fish950 Art Project  
Creative Learning and Discovery  
Chichester Cathedral  
Royal Chantry Offices  
Chichester  
West Sussex  
PO19 1PX**

## Postage Deadline

The deadline for receiving artwork at the Cathedral is **Wednesday 4th June. Artwork can be sent anytime before this date.**

**Chichester Cathedral reserve the right to withdraw any artwork which it deems to have not complied with the guidelines provided within this instruction booklet.**

# Any questions?



## Cathedral Contact

**For enquires regarding your fish artwork please contact**

Rosie Bradberry  
Creative Learning Officer  
Email: [rosie.bradberry@chichestercathedral.org.uk](mailto:rosie.bradberry@chichestercathedral.org.uk)

